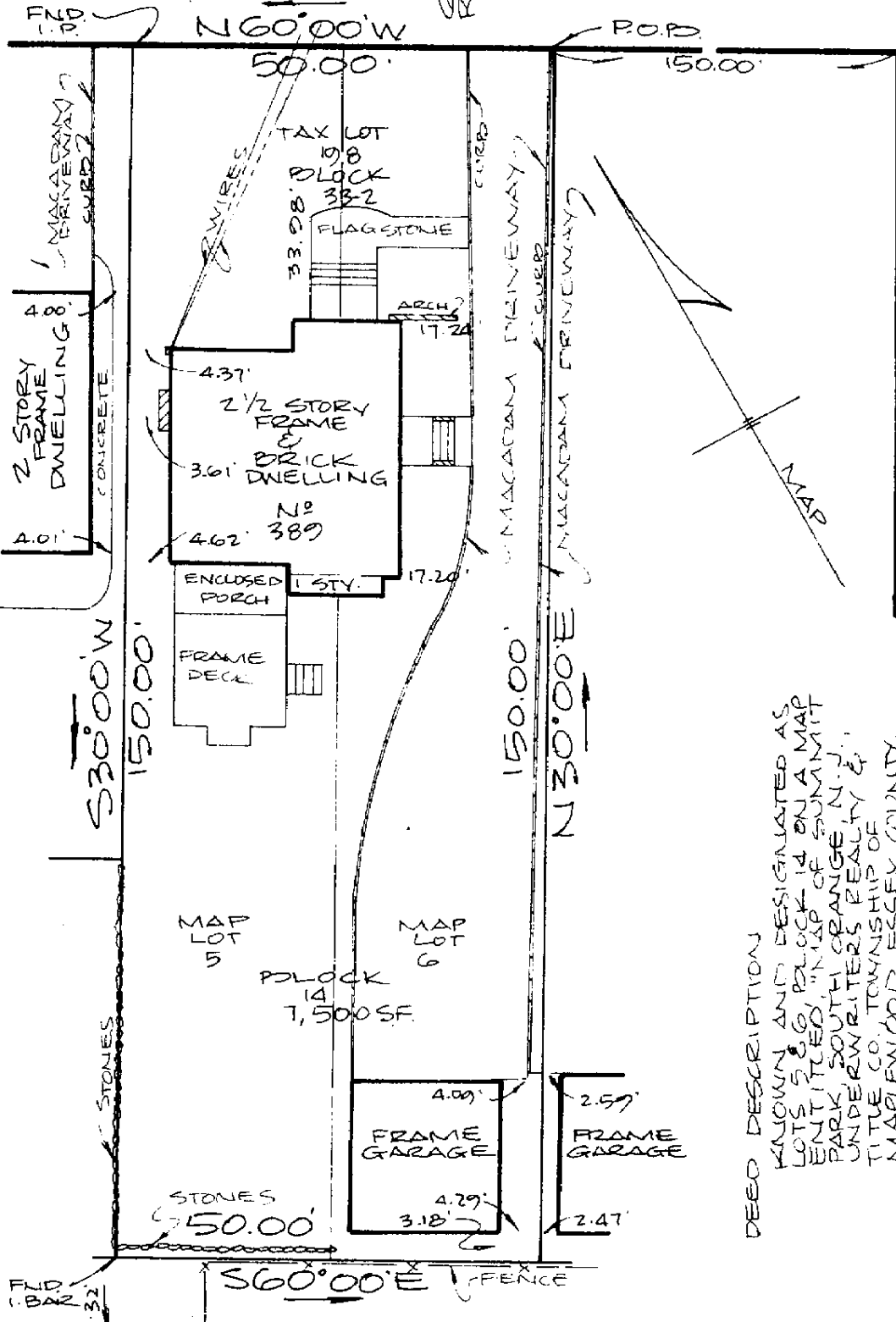


565830

# ELMWOOD AVENUE



WAIVER OF SETTING CORNER MARKERS OBTAINED FROM W.C. & J. LINE PURSUANT TO THE BOARD OF PROFESSIONAL ENGINEERS AND LAND SURVEYORS REGULATIONS N.J.A.C. 14:31-51(d).

DEED DESCRIPTION KNOWN AND DESIGNATED AS LOTS 5 & 6, BLOCK 14 ON A MAP ENTITLED "MAP OF SUMMIT PARK, SOUTH ORANGE, N.J.", UNDERWRITERS REALTY & TITLE CO. TOWNSHIP OF MAPLEWOOD, ESSEX COUNTY, N.J. FILED JULY 28, 1910 IN THE ESSEX COUNTY REGISTER'S OFFICE AS MAP NO. 628.

# ESSEX ROAD

THIS SURVEY IS SUBJECT TO ANY EASEMENTS OF RECORD AND ANY OTHER PERTINENT FACTS WHICH A TITLE SEARCH MIGHT DISCLOSE.